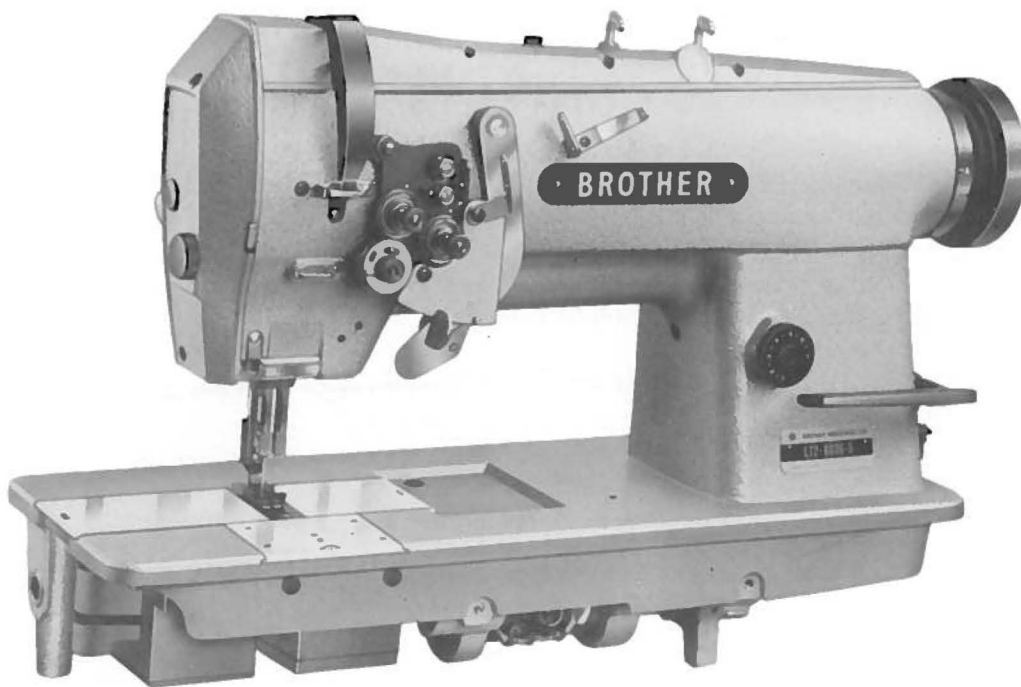


PARTS BOOK
FOR
BROTHER LT2-B836



P836002



**Twin Needle Needle Feed Corner-
Stitching Machine (Large Hook)**

BROTHER INDUSTRIES, LTD.
NAGOYA, JAPAN



Notas para usar este Libro de Piezas

1. Este libro sirve para todas las máquinas de coser que llevan la misma placa de identificación que la que se puede ver en la tapa de este libro.
2. De haber un símbolo  junto al "Parts No. (Número de Pieza)" o en la columna del "Assembly No. (Número de Juego)", habrá que mirar la lista de piezas separada de la página 10.
3. El símbolo , que se encuentra en la columna del "Número de Pieza", quiere decir que no se dispone de dicha pieza sola. Cuando, empero, hay un número en la columna del "Numero de Juego", se podrá ordenar la pieza con todo el juego. Por lo tanto, será mejor hacer el pedido recurriendo al número del juego respectivo.
4. Este libro ha sido compilado basándose en los datos de que se disponía en Diciembre de 1980.
5. Las piezas quedan sujetas a cambios de diseño sin aviso previo.

CONTENTS



| | |
|--|----|
| A. Machine Body and Threading | 1 |
| B. Upper Shaft Mechanism | 2 |
| C. Needle Bar Rocking Mechanism | 3 |
| D. Needle Bar Flip-up Mechanism | 4 |
| E. Presser Foot Mechanism | 5 |
| F. Feed Mechanism | 6 |
| G. Lower Shaft and Rotary Hook Mechanism | 7 |
| H. Lubrication | 8 |
| Z. Accessories | 9 |
| DIFFERENT PARTS LIST | 10 |
| a. GAUGE PARTS LIST | 10 |
| INDEX | 11 |

Notes for using this parts book

1. This book is applicable to sewing machines which have the same plate number as shown on the cover of this book.
2. If the symbol  is found in the "Parts No." column or the "Assembly No." column, refer to the different parts list on page 10.
3. The symbol  in the "Parts No." column indicates that the parts is not available for supply. If, however, there is a number in the "Assembly No." column, the parts can be ordered as an assembly. Please, therefore, order by using the Assembly No.
4. This book was prepared based on information available December, 1980.
5. Parts are subject to changes in design without prior notice.



Anmerkungen zum Gebrauch dieses

Stücklistebuches

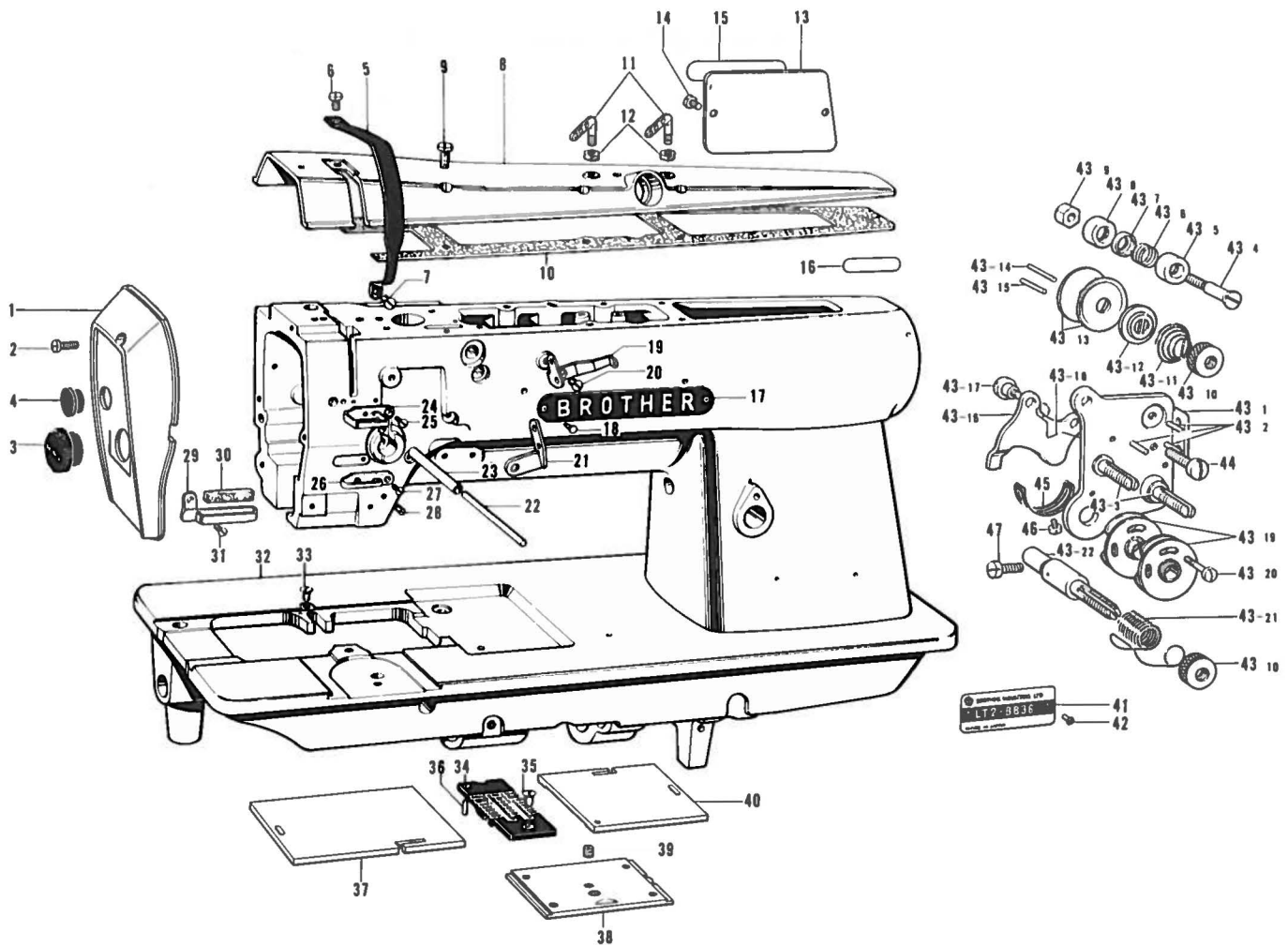
1. Dieses Buch bezieht sich auf die Nähmaschinen mit derselben Kennungsnummer wie auf diesem Buchumschlag.
2. Dieses Zeichen  in der Spalte "Parts No. (Teilnummer)" oder "Assembly No. (Gerätesatznummer)" verweist auf die Gesonderte Stückliste auf Seite 10.
3. Dieses Zeichen  in der Spalte "Teilnummer" bedeutet, daß dieser Teil nicht lieferbar ist. Wenn Jedoch in der Spalte "Gerätesatznummer" eine Nummer steht, kann disser Teil als ein Geräteteilsatz bestellt werden. Bestellen Sie daher bitte mit dieser Gerätesatznummer.
4. Dieses Boch basiert auf den Informationen vom Dezember 1980.
5. Modelländerungen sidn vorbehalten.

Notes sur l'utilisation de ce manuel

de pièces détachées

1. Ce manuel est destiné aux machines à coudre ayant le même numéro de plaque montré sur la couverture de ce manuel.
2. Si le symbole  se trouve dans la colonne "Parts No. (N° de pièce)" ou dans la colonne "Assembly No. (N° jeu de pces)", veuillez vous référer à la liste de pièces annexe page 10.
3. Le symbole  dans la colonne "N° de pièce" signifie que la pièce ne peut être fournie. Si, dans la colonne "N° jeu de pces", il y a un numéro de nomenclature, la pièce peut être commandée comme faisant partie d'un jeu de pièces. Donc, pour toute commande, veuillez spécifier le n° du jeu de pièces.
4. Ce manuel a été fait d'après les renseignements valables au mois de Decembre 1980.
5. Les pièces peuvent être sujettes à des modifications sans préavis.

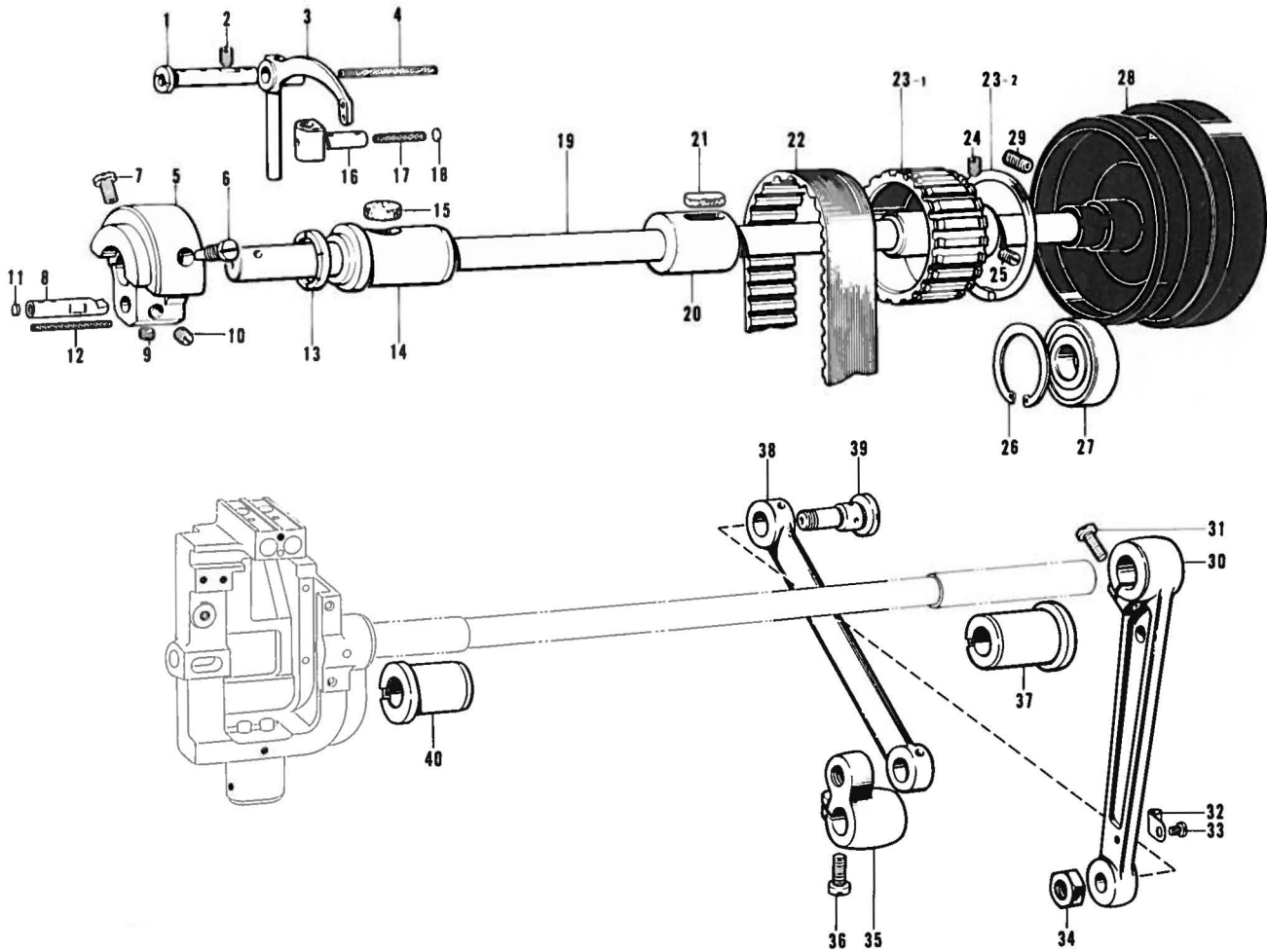
A. Machine Body and Threading



| Ref. No. | Name of Parts | Q'ty | Parts No. | Assembly No. | Ref. No. | Name of Parts | Q'ty | Parts No. | Assembly No. |
|----------|--------------------------|------|-------------|--------------|----------|----------------------------|------|-------------|--------------|
| A-1 | Face Plate | 1 | 155440-0-01 | | A-35 | Screw 4.37 | 1 | 100032-0-03 | |
| A-2 | Screw 3.57 x 8 | 2 | 009670-8-12 | | A-36 | Pin | 1 | 113386-0-00 | |
| A-3 | Face Plate Cap | 1 | 150815-0-01 | | A-37 | Slide Plate, Left | 1 | 112606-0-01 | |
| A-4 | Oil Cap | 1 | 104449-0-01 | | A-38 | Slide Plate, Front | 1 | 112610-0-01 | |
| A-5 | Thread Take-up Cover | 1 | 155439-0-01 | | A-39 | Screw 5.16 | 1 | 116010-0-01 | |
| A-6 | Screw 4.76 x 8 | 1 | 009710-8-12 | | A-40 | Slide Plate, Right | 1 | 112607-0-01 | |
| A-7 | Screw 3.57 | 1 | 108960-0-04 | | A-41 | Model Plate | 1 | | |
| A-8 | Top Cover | 1 | 153876-0-02 | | A-42 | Model Plate Pin | 2 | | |
| A-9 | Screw 4.37 x 12 | 7 | 009681-2-14 | | A-43-1 | Upper Thread Tension Plate | 1 | | |
| A-10 | Top Cover Packing | 1 | 150989-0-00 | | A-43-2 | Pin | 3 | | |
| A-11 | Top Cover Thread Guide | 2 | 140527-0-01 | | A-43-3 | Tension Stud | 2 | | |
| A-12 | Nut 5.95 | 2 | 150553-0-03 | | A-43-4 | Stud Screw | 2 | 144689-0-01 | |
| A-13 | Rear Cover | 1 | 112566-0-03 | | A-43-5 | Cap | 2 | 144685-0-01 | |
| A-14 | Screw 3.57 x 6 | 2 | 009670-6-12 | | A-43-6 | Thread Guide Spring | 2 | 144688-0-01 | |
| A-15 | Name Plate | 1 | | | A-43-7 | Disc | 2 | 144686-0-01 | |
| A-16 | Parts Book Number Plate | 1 | | | A-43-8 | Thread Guide Bracket | 2 | 144687-0-01 | |
| A-17 | Name Plate | 1 | | | A-43-9 | Nut 3.57 | 2 | 021670-1-02 | |
| A-18 | Pin | 2 | | | A-43-10 | Tension Control Nut | 3 | 108265-0-01 | |
| A-19 | Thread Guide F1 | 1 | 155493-0-01 | | A-43-11 | Tension Spring | 2 | 155492-0-01 | |
| A-20 | Screw 3.57 | 1 | 108960-0-04 | | A-43-12 | Presser for Tension Disc | 2 | 100134-0-01 | |
| A-21 | Thread Guide F2 | 1 | 155494-0-01 | | A-43-13 | Tension Disc | 4 | 145446-0-01 | |
| A-22 | Tension Release Bar | 1 | 144823-0-01 | | A-43-14 | Pin | 1 | 144704-0-01 | |
| A-23 | Pipe | 1 | 112714-0-00 | | A-43-15 | Pin | 1 | 144703-0-01 | |
| A-24 | Arm Thread Guide Upper | 1 | 108266-0-01 | | A-43-16 | Tension Release Plate | 1 | 144683-0-01 | |
| A-25 | Screw 3.57 | 1 | 108960-0-04 | | A-43-17 | Stud Screw 3.57 | 2 | 112712-0-01 | |
| A-26 | Arm Thread Guide, Center | 1 | 112658-0-01 | | A-43-18 | Arm Thread Guide Upper | 2 | 118320-0-01 | |
| A-27 | Screw 3.57 | 1 | 108960-0-04 | | A-43-19 | Spring Guide | 2 | 108254-0-01 | |
| A-28 | Screw 4.37 | 2 | 151602-0-02 | | A-43-20 | Screw 2.38 | 1 | 144682-0-01 | |
| A-29 | Arm Thread Guide, Lower | 1 | 112715-0-01 | | A-43-21 | Thread Take-up Spring | 1 | 155491-0-01 | |
| A-30 | Felt | 1 | 114941-0-01 | | A-43-22 | Tension Stud | 1 | 144680-0-01 | |
| A-31 | Screw 3.57 | 1 | 108960-0-04 | | A-44 | Screw 4.37 x 10 | 1 | 009681-0-14 | |
| A-32 | Arm Bed | 1 | | | A-45 | Stopper | 1 | 112709-0-01 | |
| A-33 | Screw 3.57 | 1 | 112751-0-02 | | A-46 | Screw 3.57 x 6 | 1 | 009670-6-12 | |
| A-34 | Needle Plate 1/4" | 1 | 117367-0-01 | | A-47 | Screw 3.57 | 1 | 100064-0-02 | |

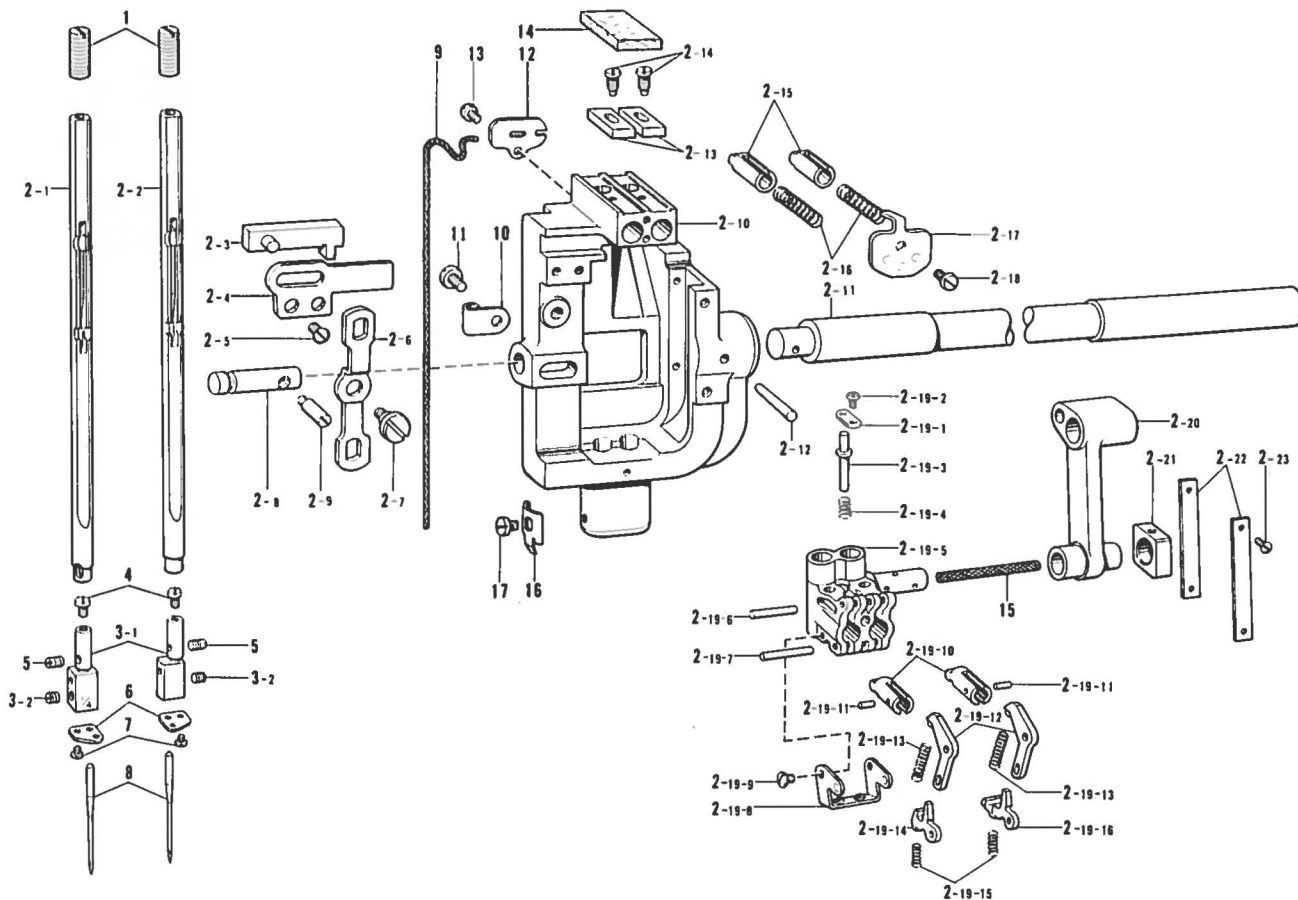
A-43
Upper Tension
Control
Assembly
155490-0-01

B. Upper Shaft Mechanism



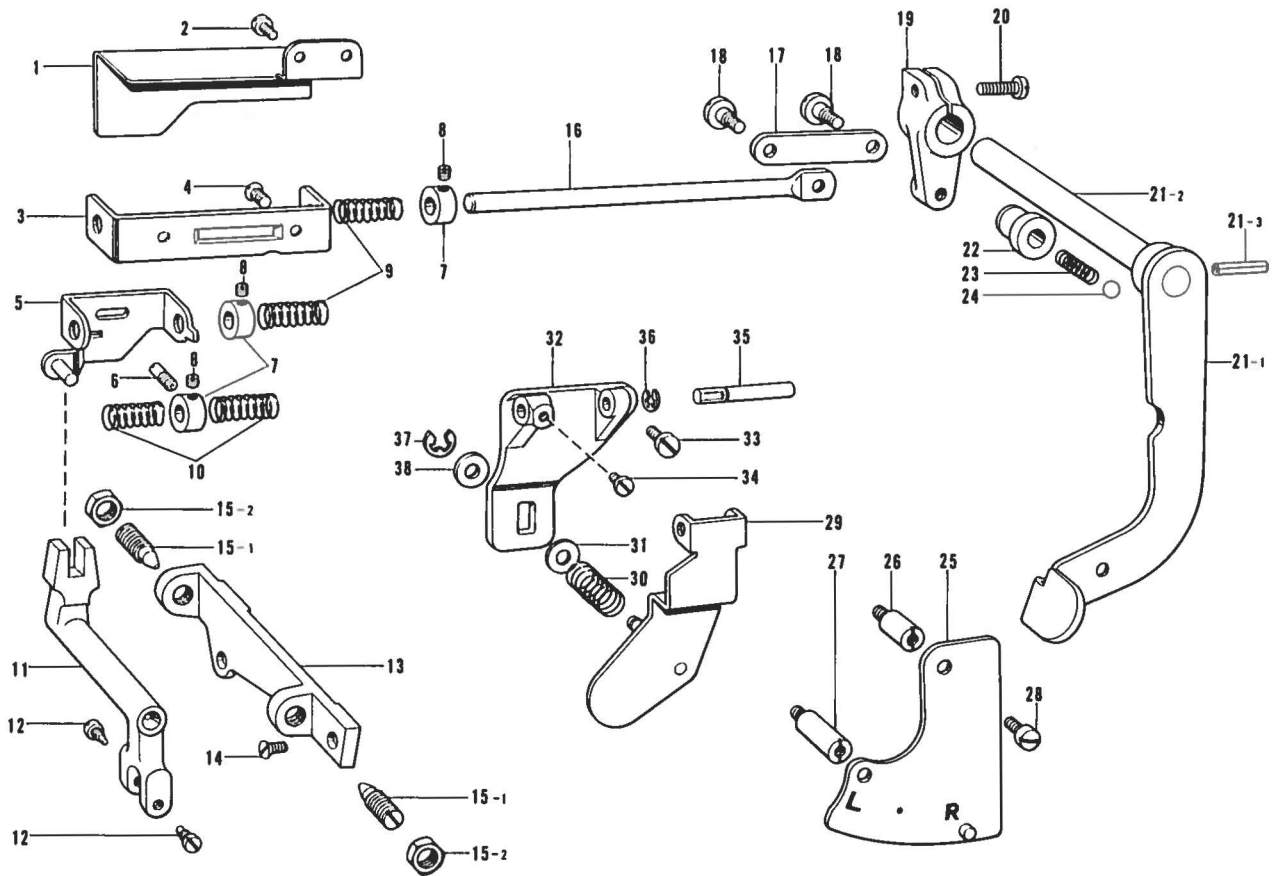
| Ref. No. | Name of Parts | Q'ty | Parts No. | Assembly No. | Ref. No. | Name of Parts | Q'ty | Parts No. | Assembly No. |
|----------|----------------------------------|------|-------------|--------------|----------|--------------------------------------|------|-------------|--|
| B-1 | Stud | 1 | 155444-0-01 | | B-23-1 | Timing Pulley, Upper | 1 | | B-23 Timing Pulley, Upper Assembly 180157-0-01 |
| B-2 | Screw 5.95 | 2 | 151605-0-01 | | B-23-2 | Side Ring | 2 | | |
| B-3 | Thread Take-up Lever | 1 | 155443-0-01 | | B-24 | Screw 6.35 x 12 | 1 | 015771-2-12 | |
| B-4 | Wick | 1 | 150995-0-00 | | B-25 | Screw 6.35 x 12 | 1 | 013771-2-12 | |
| B-5 | Counter Weight | 1 | 149820-0-00 | | B-26 | Stop Ring C | 1 | 112760-0-01 | |
| B-6 | Screw 7.14 | 1 | 100250-0-01 | | B-27 | Bearing 6204 VV. | 1 | 072620-4-60 | |
| B-7 | Screw 7.14 | 1 | 146141-0-01 | | B-28 | Pulley | 1 | 144614-0-01 | |
| B-8 | Needle Bar Crank | 1 | 149821-0-01 | | B-29 | Screw 5.95 | 2 | 013761-4-10 | |
| B-9 | Screw 6.35 | 1 | 101706-0-01 | | B-30 | Needle Bar Connecting Rod | 1 | 112595-0-00 | |
| B-10 | Screw 6.35 | 1 | 100251-0-01 | | B-31 | Screw 6.35 | 1 | 105351-0-02 | |
| B-11 | Pusher | 1 | 113014-0-00 | | B-32 | Wick Supporter | 1 | 112739-0-01 | |
| B-12 | Wick | 1 | 112735-0-00 | | B-33 | Screw 3.57 x 5 | 1 | 009670-5-12 | |
| B-13 | Thrust Ring | 1 | 112576-0-01 | | B-34 | Nut 7.94 | 2 | 101268-0-03 | |
| B-14 | Upper Shaft Bushing, Left | 1 | 112573-0-01 | | B-35 | Needle Bar Connecting Crank | 1 | 112598-0-01 | |
| B-15 | Felt | 1 | 112734-0-01 | | B-36 | Screw 6.35 x 18 | 1 | 009781-8-12 | |
| B-16 | Thread Take-up Lever Slide Block | 1 | 155445-0-01 | | B-37 | Needle Bar Rock Shaft Bushing, Right | 1 | 112764-0-01 | |
| B-17 | Wick | 1 | 114693-0-01 | | B-38 | Needle Bar Rock Link | 1 | 112596-0-01 | |
| B-18 | Pusher | 1 | 113024-0-00 | | B-39 | Needle Bar Rock Link Stud | 2 | 112597-0-01 | |
| B-19 | Upper Shaft | 1 | 112572-0-01 | | B-40 | Needle Bar Rock Shaft Bushing, Left | 1 | 112594-0-01 | |
| B-20 | Upper Shaft Bushing, Center | 1 | 114680-0-01 | | | | | | |
| B-21 | Felt | 1 | 100248-0-01 | | | | | | |
| B-22 | Timing Belt | 1 | 112586-0-01 | | | | | | |

C. Needle Bar Rocking Mechanism



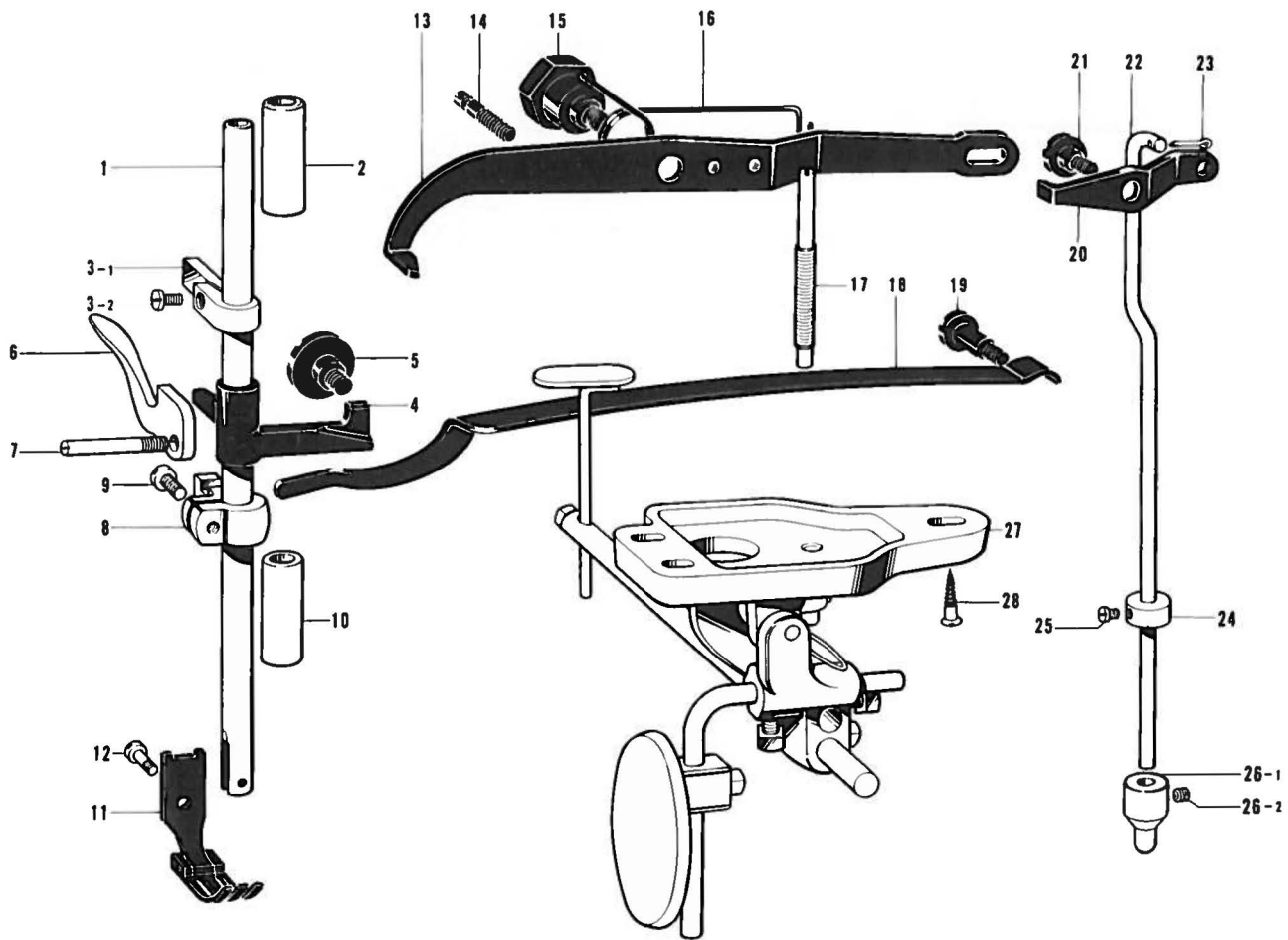
| Ref. No. | Name of Parts | Q'ty | Parts No. | Assembly No. | Ref. No. | Name of Parts | Q'ty | Parts No. | Assembly No. | |
|------------|---------------------------|------|-------------|--|----------------------|------------------------------|-------------|-------------|--|--|
| C- 1 | Needle Bar Stopper Screw | 2 | 150817-1-01 | C-2 Needle Bar Rock Shaft Assembly 150369-0-01 | C- 2-19-10 | Clutch | 2 | | C-2 Needle Bar Rock Shaft Assembly 150369-0-01 | |
| C- 2- 1 | Needle Bar Left Assembly | 1 | 153604-0-01 | | C- 2-19-11 | Pin 1.5 x 5.8 | 2 | 149604-0-01 | | |
| C- 2- 2 | Needle Bar Right Assembly | 1 | 153606-0-01 | | C- 2-19-12 | Clutch Lever | 2 | | | |
| C- 2- 3 | Slide Block Assembly | 1 | | | C- 2-19-13 | Spring | 2 | 149605-0-01 | | |
| C- 2- 4 | Slide Block Guide Plate | 1 | 149617-0-01 | | C- 2-19-14 | Clutch Stopper, Left | 1 | 149606-0-01 | | |
| C- 2- 5 | Screw 3.57 | 2 | 102843-0-01 | | C- 2-19-15 | Slide Plate Stopper Spring | 2 | 112609-0-01 | | |
| C- 2- 6 | Slide Block Driving Lever | 1 | 149616-0-01 | | C- 2-19-16 | Clutch Stopper, Right | 1 | 149607-0-01 | | |
| C- 2- 7 | Screw 4.37 | 1 | 120264-0-01 | | C- 2-20 | Needle Bar Crank Rod | 1 | 149613-0-01 | | C-2 Needle Bar Rock Shaft Assembly 150369-0-01 |
| C- 2- 8 | Slide Block Driving Stud | 1 | 149614-0-01 | | C- 2-21 | Needle Bar Guide Slide Block | 1 | 150816-0-01 | | |
| C- 2- 9 | Screw | 1 | 149615-0-01 | | C- 2-22 | Guide Plate | 2 | | | C-3 Needle Clamp with Screw 1/4" 150830-0-01 |
| C- 2-10 | Needle Bar Support | 1 | | | C- 2-23 | Screw 2.38 | 4 | 102731-0-04 | | |
| C- 2-11 | Needle Bar Rock Shaft | 1 | | | C- 3- 1 | Needle Clamp 1/4" | 2 | | | |
| C- 2-12 | Pin | 1 | 107030-0-01 | | C- 3- 2 | Screw 3.18 x 4 | 2 | 013660-4-13 | | |
| C- 2-13 | Needle Bar Rotate Stopper | 2 | 149624-0-01 | | C- 4 | Screw 3.18 | 2 | 149831-0-01 | | |
| C- 2-14 | Screw 3.18 | 2 | 149625-0-01 | | C- 5 | Screw 3.18 | 2 | 149833-0-01 | | |
| C- 2-15 | Needle Bar Stopper | 2 | 149621-0-01 | | C- 6 | Thread Guide Plate | 2 | 149832-0-01 | | |
| C- 2-16 | Needle Bar Stopper Spring | 2 | 149622-0-01 | | C- 7 | Screw 1.98 | 2 | 107404-0-00 | | |
| C- 2-17 | Spring Lid | 1 | 149623-0-01 | C- 8 | Needle DP x 5 | 2 | | | | |
| C- 2-18 | Screw 3.18 x 5 | 1 | 001660-5-12 | C- 9 | Wick | 1 | 150374-0-00 | | | |
| C- 2-19- 1 | Release Pin Cover | 1 | 149612-0-01 | C-10 | Wick Supporter | 2 | 112739-0-01 | | | |
| C- 2-19- 2 | Screw 2.38 x 3.5 | 1 | 001639-3-12 | C-11 | Screw 3.57 x 5 | 2 | 009670-5-12 | | | |
| C- 2-19- 3 | Release Pin | 1 | 149610-0-01 | C-12 | Wick Cover | 1 | 149626-0-01 | | | |
| C- 2-19- 4 | Release Pin Spring | 1 | 149611-0-01 | C-13 | Screw 3.18 x 5 | 1 | 001660-5-12 | | | |
| C- 2-19- 5 | Needle Bar Clamp | 1 | | C-14 | Felt | 1 | 149834-0-00 | | | |
| C- 2-19- 6 | Pin 2 x 15.8 | 1 | 149827-0-01 | C-15 | Wick | 1 | 150825-0-01 | | | |
| C- 2-19- 7 | Pin 2 x 17.8 | 1 | 149608-0-01 | C-16 | Needle Bar Indicator | 1 | 148598-0-01 | | | |
| C- 2-19- 8 | Spring Holder | 1 | 149609-0-01 | C-17 | Screw 2.38 | 1 | 105288-0-01 | | | |
| C- 2-19- 9 | Screw 2.38 | 2 | 100105-0-02 | | | | | | | |

D. Needle Bar Flip-up Mechanism



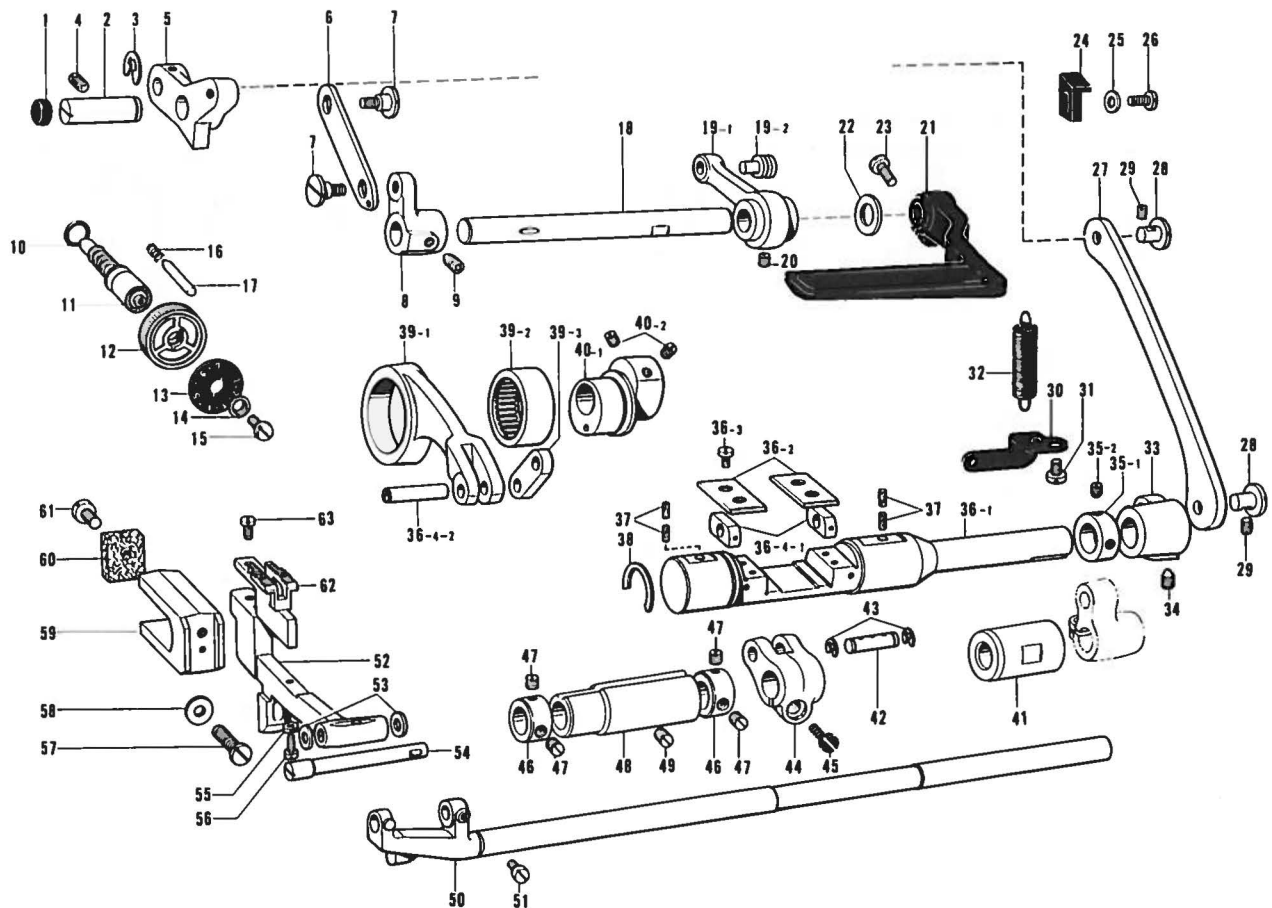
| Ref. No. | Name of Parts | Q'ty | Parts No. | Assembly No. | Ref. No. | Name of Parts | Q'ty | Parts No. | Assembly No. |
|----------|--------------------------------------|------|-------------|--|----------|-------------------------------|------|-------------|---|
| D-1 | Slide Shaft Cover | 1 | 149866-0-02 | | D-20 | Screw 4.76 x 14 | 1 | 009711-4-13 | |
| D-2 | Screw 3.57 x 6 | 2 | 009670-6-12 | | D-21-1 | Stop Lever | 1 | | D-21 Stop Lever Shaft Assembly 149847-0-01 |
| D-3 | Slide Shaft Supporter | 1 | 149858-0-01 | | D-21-2 | Stop Lever Shaft | 1 | | |
| D-4 | Screw 4.37 | 2 | 107272-0-02 | | D-21-3 | Spring Pin AW3 | 1 | 047301-8-42 | |
| D-5 | Slide Shaft Support Bracket Assembly | 1 | 149860-0-01 | | D-22 | Joint Guide Bushing | 1 | 150819-0-01 | |
| D-6 | Guide Screw | 1 | 149865-0-01 | | D-23 | Spring | 1 | 150820-0-01 | |
| D-7 | Collar | 3 | 149864-0-01 | | D-24 | Steel Ball | 1 | 071063-5-50 | |
| D-8 | Screw 3.57 | 5 | 011679-3-12 | | D-25 | Flip-up Holder Plate Assembly | 1 | 150818-0-01 | |
| D-9 | Spring | 2 | 149857-0-01 | | D-26 | Stud (S) | 1 | 149853-0-01 | |
| D-10 | Spring | 2 | 149863-0-01 | | D-27 | Stud (L) | 1 | 149852-0-01 | |
| D-11 | Rock Crank | 1 | 149868-0-01 | | D-28 | Screw 4.76 x 8 | 2 | 009710-8-13 | |
| D-12 | Screw | 2 | 100043-0-03 | | D-29 | Push Lever Assembly | 1 | 149839-0-01 | |
| D-13 | Rock Crank Shaft Supporter | 1 | 149867-0-01 | | D-30 | Push Lever Spring | 1 | 149843-0-01 | |
| D-14 | Screw 4.37 | 2 | 107272-0-02 | | D-31 | Washer 4.76 | 1 | 025710-2-32 | |
| D-15-1 | Taper Screw, Right 7.14 | 2 | | D-15 Taper Screw Assembly 115638-0-04 | D-32 | Push Lever Bracket | 1 | 149837-0-01 | |
| D-15-2 | Nut 7.14 | 2 | | | D-33 | Screw 4.76 x 10 | 2 | 009711-0-12 | |
| D-16 | Slide Shaft | 1 | 149859-0-01 | | D-34 | Screw 3.57 x 5 | 1 | 009670-5-12 | |
| D-17 | Lever Shaft Arm Link | 1 | 149856-0-01 | | D-35 | Stud 5 x 32 | 1 | 149838-0-01 | |
| D-18 | Screw 4.37 | 2 | 146597-1-01 | | D-36 | Stop Ring | 1 | 048030-3-42 | |
| D-19 | Lever Shaft Arm | 1 | 149855-0-01 | | D-37 | Stop Ring | 1 | 048040-3-42 | |
| | | | | | D-38 | Washer 4.76 | 1 | 025710-2-32 | |

E. Presser Foot Mechanism



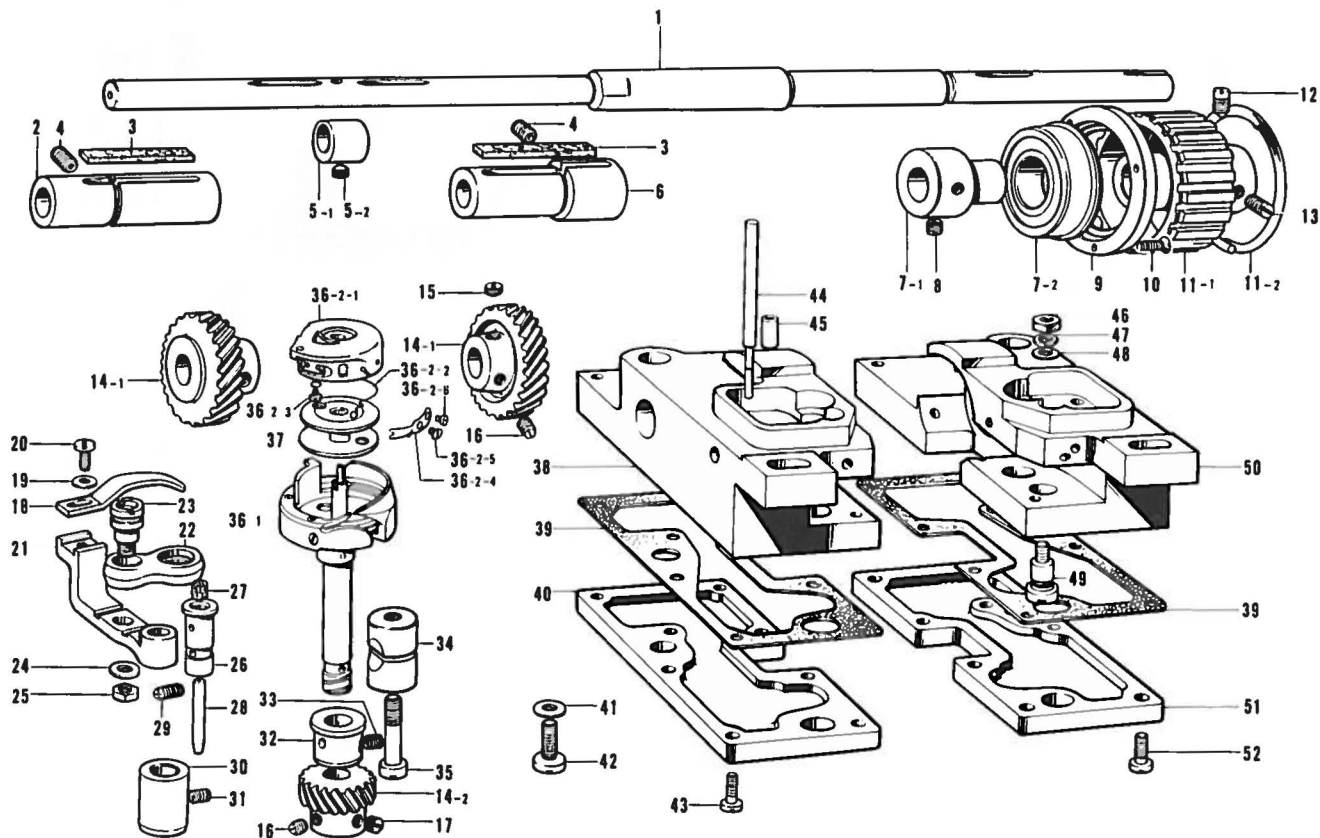
| Ref. No. | Name of Parts | Q'ty | Parts No. | Assembly No. | Ref. No. | Name of Parts | Q'ty | Parts No. | Assembly No. |
|----------|----------------------------|------|-------------|---|----------|----------------------------|------|-------------|---|
| E- 1 | Presser Bar | 1 | 112614-0-01 | | F-15 | Screw 6.35 | 1 | 112626-0-01 | |
| E- 2 | Presser Bar Bushing, Upper | 1 | 112615-0-01 | | E-16 | Spring | 1 | 112629-0-01 | |
| E- 3-1 | Presser Bar Guide | 1 | | E-3 Presser Bar Guide Assembly 180950-0-01 | E-17 | Presser Adjusting Screw | 1 | 112624-0-01 | |
| E- 3-2 | Screw 4.37 x 7 | 1 | 009680-7-12 | | E-18 | Presser Plate Spring | 1 | 118170-1-01 | |
| F- 4 | Presser Bar Lifter | 1 | 148483-0-01 | | E-19 | Screw 6.35 | 1 | 112623-0-01 | |
| E- 5 | Screw | 1 | 112631-0-01 | | E-20 | Knee Lifter Lever | 1 | 155505-0-01 | |
| F- 6 | Presser Foot Lifter | 1 | 112618-0-01 | | F-21 | Screw 6.35 | 1 | 112628-0-01 | |
| F- 7 | Screw | 1 | 112619-0-01 | | F-22 | Knee Lifter Connecting Rod | 1 | 155447-0-01 | |
| F- 8 | Presser Bar Bracket | 1 | 112616-0-01 | | F-23 | Pin | 1 | 114909-0-01 | |
| F- 9 | Screw 3.57 x 8 | 1 | 009670-8-12 | | F-24 | Set Collar | 1 | 149864-0-01 | |
| F-10 | Presser Bar Bushing, Lower | 1 | 112763-0-01 | | F-25 | Screw 3.57 | 1 | 144458-0-01 | |
| F-11 | Presser Foot ¼" | 1 | 155453-0-01 | | E-26-1 | Knee Lifter Bracket | 1 | | E-26 Knee Lifter Bracket Assembly 183140-0-01 |
| E-12 | Screw 3.57 | 1 | 113050-0-01 | | E-26-2 | Screw 4.37 | 1 | 151601-0-02 | |
| F-13 | Knee Lifter Lever | 1 | 112625-0-01 | | F-27 | Knee Lifter Assembly | 1 | 151098-0-01 | |
| F-14 | Stopper Screw | 1 | 112630-0-01 | | F-28 | Screw 6.2 x 32 | 3 | 106030-0-01 | |

F. Feed Mechanism



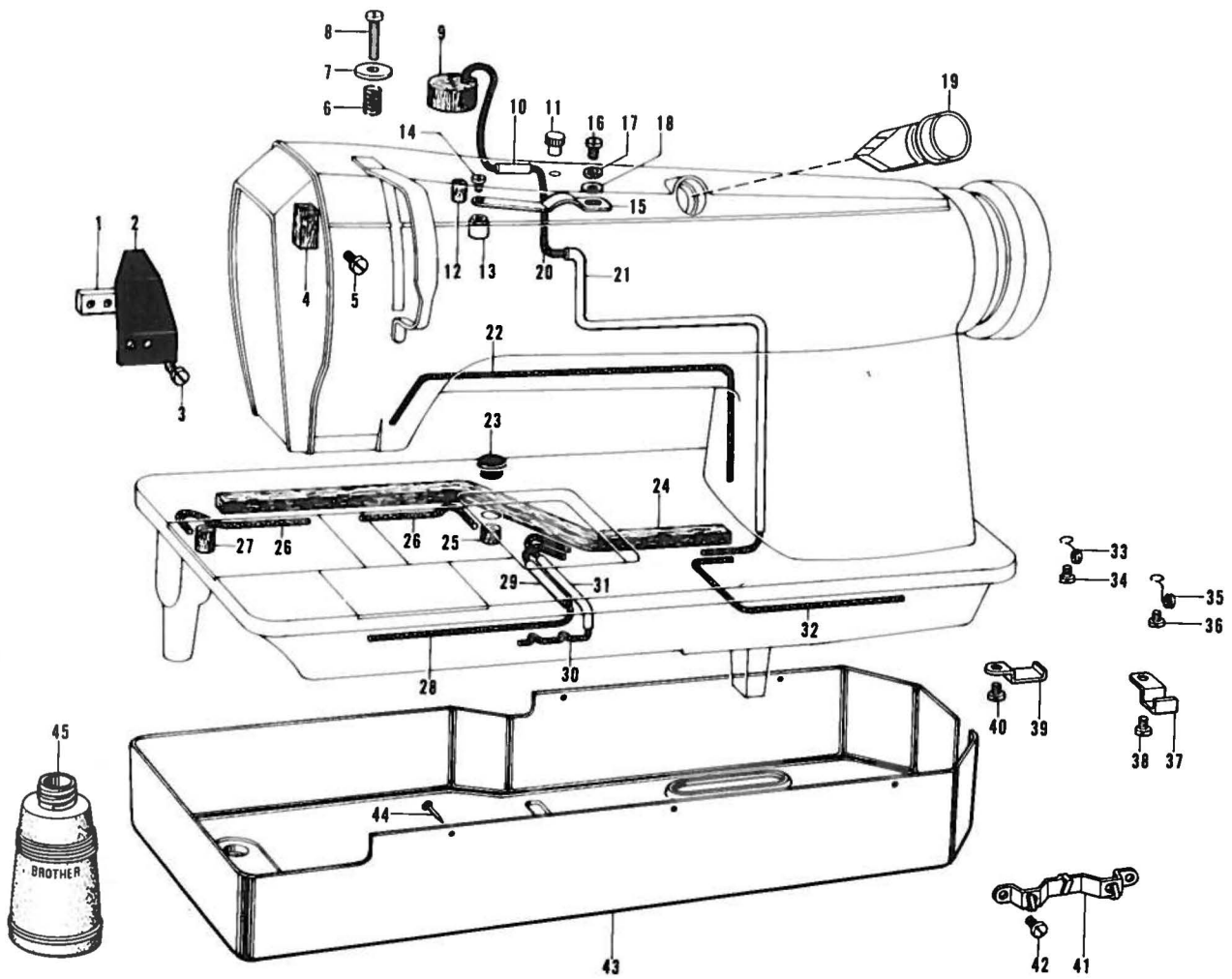
| Ref. No. | Name of Parts | Q'ty | Parts No. | Assembly No. | Ref. No. | Name of Parts | Q'ty | Parts No. | Assembly No. |
|----------|--------------------------------|------|-------------|----------------------------------|----------|--------------------------------|------|-------------|---|
| F- 1 | Cap | 1 | 143766-0-01 | | F-36-1 | Feed Regulator Shaft | 1 | | F-36 Feed Regulator Shaft Assembly 148771-0-01 |
| F- 2 | Feed Regulator Stud | 1 | 148488-0-01 | | F-36-2 | Guide Plate | 2 | 143594-0-01 | |
| F- 3 | Stop Ring E7 | 1 | 048070-3-42 | | F-36-3 | Screw 4.37 x 10 | 4 | 009681-0-12 | |
| F- 4 | Screw 5.95 | 1 | 151605-0-01 | | F-36-4-1 | Feed Regulator Slide Block | 2 | | F-36-4 Slide Block Assembly 145328-0-01 |
| F- 5 | Feed Regulator Stud | 1 | 148489-0-01 | | F-36-4-2 | Pin | 1 | | |
| F- 6 | Connecting Plate | 1 | 118746-0-01 | | F-37 | Felt | 4 | 148743-0-01 | |
| F- 7 | Screw 4.37 | 2 | 112072-0-01 | | F-38 | Stop Ring | 1 | 143597-0-01 | |
| F- 8 | Feed Regulator Bracket | 1 | 118747-0-01 | | F-39-1 | Lever Feed Connecting Rod | 1 | 150927-0-00 | F-39 Level Feed Connecting Rod Assembly 150926-0-01 |
| F- 9 | Screw 5.95 | 1 | 118853-0-01 | | F-39-2 | Needle Bearing | 1 | 118954-0-00 | |
| F-10 | Packing | 1 | 108549-0-01 | | F-39-3 | Level Feed Connecting Link | 1 | 143613-0-01 | |
| F-11 | Length Control Screw | 1 | 143598-0-01 | | F-40-1 | Eccentric Wheel | 1 | | F-40 Eccentric Wheel With Screw 155451-0-01 |
| F-12 | Length Control Dial | 1 | 153168-0-01 | | F-40-2 | Screw 5.95 | 2 | 151605-0-01 | |
| F-13 | Length Control Plate | 1 | 154792-0-01 | | F-41 | Feed Rock Shaft Bushing, Right | 1 | 148493-0-01 | |
| F-14 | Length Control Supporter | 1 | 142746-0-02 | | F-42 | Stud | 1 | 143616-0-01 | |
| F-15 | Screw 4.76 | 1 | 142747-0-02 | | F-43 | Stop Ring E6 | 2 | 048060-3-42 | |
| F-16 | Notch Spring | 1 | 100328-0-01 | | F-44 | Lever Feed Arm | 1 | 150930-0-01 | |
| F-17 | Pin | 1 | 145502-0-01 | | F-45 | Screw 6.35 x 18 | 1 | 009781-8-12 | |
| F-18 | Feed Regulator Lever Shaft | 1 | 155450-0-01 | | F-46 | Collar | 2 | 113074-0-01 | |
| F-19-1 | Link (B) | 1 | | F-19 Link Assembly 143608-0-01 | F-47 | Screw 6.35 | 4 | 101706-0-01 | |
| F-19-2 | Spring Hook | 1 | 108546-0-01 | | F-48 | Feed Rock Shaft Bushing, Left | 1 | 148494-0-01 | |
| F-20 | Screw 5.95 x 6 | 1 | 014760-6-22 | | F-49 | Screw 5.95 | 1 | 013761-4-10 | |
| F-21 | Reverse Lever | 1 | 147503-0-01 | | F-50 | Feed Rock Shaft | 1 | 149001-0-01 | |
| F-22 | Spacer | 1 | 156070-0-01 | | F-51 | Screw 4.37 | 1 | 104908-0-04 | |
| F-23 | Screw 4.76 x 14 | 1 | 009711-4-12 | | F-52 | Feed Bracket | 1 | 151081-0-01 | |
| F-24 | Reverse Lever Stopper | 1 | 149282-0-01 | | F-53 | Thrust Ring | 2 | 143591-0-01 | |
| F-25 | Washer | 1 | 100645-0-03 | | F-54 | Feed Bracket Shaft | 1 | 148977-0-01 | |
| F-26 | Screw 4.37 x 10 | 1 | 009681-0-12 | | F-55 | Nut 3.18 | 1 | 021660-1-03 | |
| F-27 | Feed Regulator Connecting Link | 1 | 155448-0-01 | | F-56 | Screw 3.18 | 1 | 107278-0-02 | |
| F-28 | Pin | 2 | 118713-0-01 | | F-57 | Screw 5.95 x 14 | 1 | 009761-4-12 | |
| F-29 | Screw 4.37 | 2 | 151602-0-01 | | F-58 | Washer 6 | 1 | 025060-1-32 | |
| F-30 | Spring Hook Plate | 1 | 143610-0-01 | | F-59 | Feed Bracket Fork | 1 | 150958-0-01 | |
| F-31 | Screw 4.76 x 8 | 1 | 009710-8-12 | | F-60 | Felt | 1 | 112759-0-01 | |
| F-32 | Spring | 1 | 143609-0-01 | | F-61 | Screw 3.57 | 1 | 100242-0-03 | |
| F-33 | Feed Regulator Arm | 1 | 155449-0-01 | | F-62 | Feed Dog 1/4" | 1 | 112660-0-01 | |
| F-34 | Screw 5.95 | 1 | 118853-0-01 | | F-63 | Screw 3.18 | 2 | 116283-0-01 | |
| F-35-1 | Collar | 1 | | F-35 Collar Assembly 180321-0-01 | | | | | |
| F-35-2 | Screw 6.35 | 2 | 101706-0-01 | | | | | | |

G. Lower Shaft and Rotary Hook Mechanism



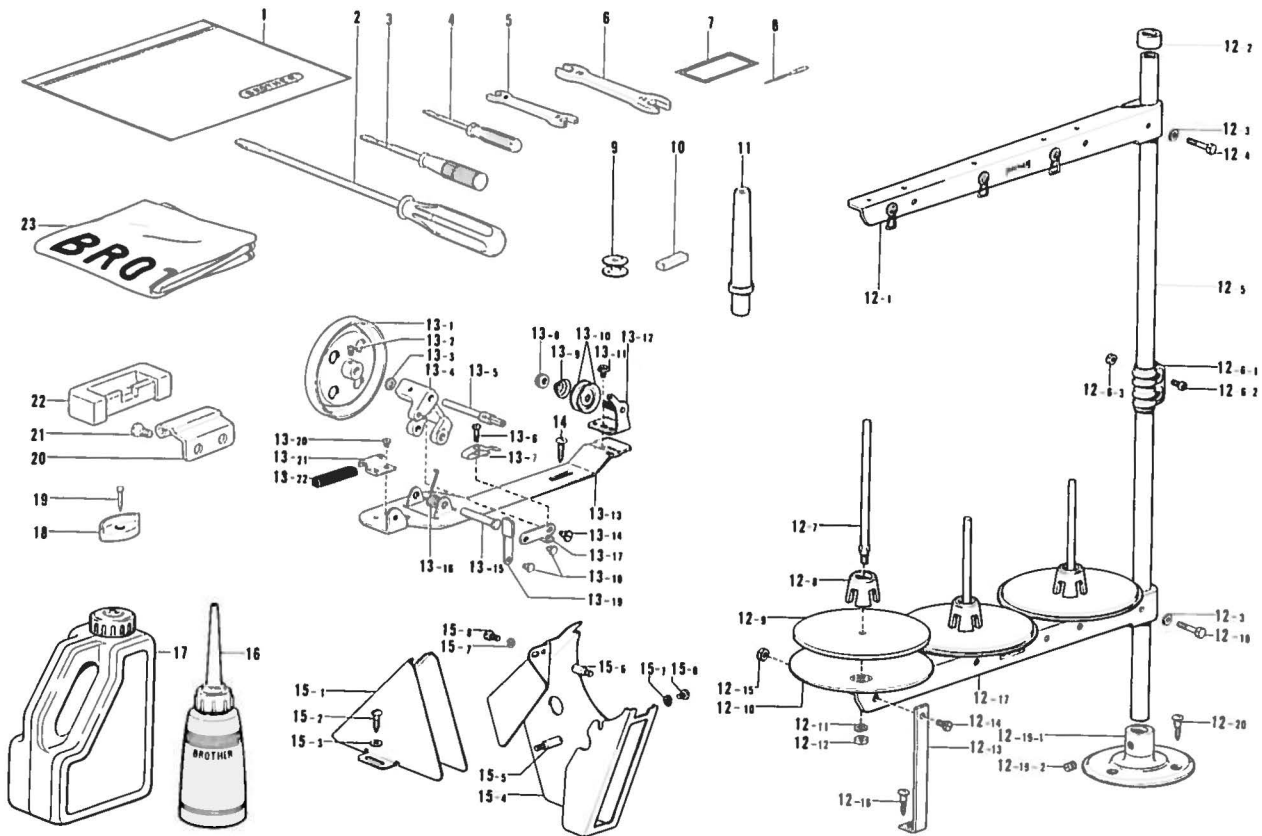
| Ref. No. | Name of Parts | Q'ty | Parts No. | Assembly No. | Ref. No. | Name of Parts | Q'ty | Parts No. | Assembly No. |
|----------|---------------------------------|------|-------------|--|----------|---------------------------------------|------|-------------|---|
| G-1 | Lower Shaft | 1 | 151082-0-01 | | G-27 | Felt | 2 | 107155-0-01 | |
| G-2 | Rotary Hook Base Bushing, Left | 1 | 148503-0-00 | | G-28 | Pipe | 1 | 112696-0-00 | |
| G-3 | Felt | 2 | 113362-0-01 | | G-29 | Screw 4.76 | 2 | 153483-0-01 | |
| G-4 | Screw 5.95 | 2 | 151604-0-01 | | G-30 | Rotary Hook Shaft D | 2 | 150965-0-01 | |
| G-5-1 | Vertical Feed Eccentric Wheel | 1 | | G-5 Feed Eccentric Assembly 181486-0-01 | G-31 | Screw 4.76 | 2 | 107794-0-01 | |
| G-5-2 | Screw 6.35 | 1 | 112684-0-01 | | G-32 | Rotary Hook Shaft U | 2 | 150964-1-01 | |
| G-6 | Rotary Hook Base Bushing, Right | 1 | 148502-0-00 | | G-33 | Screw 4.76 | 2 | 107794-0-01 | |
| G-7-1 | Ball Bearing | 1 | 112666-0-00 | G-7 Bearing Holder Assembly 112698-0-01 | G-34 | Pinch Sleeve | 2 | 112699-0-01 | |
| G-7-2 | Bushing | 1 | 112667-0-01 | | G-35 | Screw 5.95 | 2 | 112700-0-01 | |
| G-8 | Screw 6.35 x 7 | 2 | 013780-7-10 | | G-36-1 | Outer Rotary Hook Assembly | 2 | | G-36 Rotary Hook 155466-0-01 |
| G-9 | Presser | 1 | 112668-0-01 | | G-36-2-1 | Bobbin Case | 2 | | G-36-2 Bobbin Case Assembly 155476-0-01 |
| G-10 | Screw 3.57 x 12 | 3 | 005671-2-12 | | G-36-2-2 | Spring | 2 | 155478-0-01 | |
| G-11-1 | Timing Pulley, Lower | 1 | | G-11 Timing Pulley, Lower Assembly 180164-0-01 | G-36-2-3 | Screw | 2 | 151035-0-01 | |
| G-11-2 | Side Ring | 1 | | | G-36-2-4 | Tension Adjusting Spring | 2 | 155479-0-01 | |
| G-12 | Screw 6.35 x 12 | 1 | 015771-2-12 | | G-36-2-5 | Tension Adjusting Screw | 2 | 151029-0-01 | |
| G-13 | Screw 6.35 x 12 | 1 | 013771-2-12 | | G-36-2-6 | Screw | 2 | 155480-0-01 | |
| G-14-1 | Spiral Gear | 2 | | G-14 Spiral Gear Assembly 180949-0-01 | G-37 | Bobbin | 2 | 155484-0-01 | |
| G-14-2 | Pinion | 2 | | | G-38 | Rotary Hook Base, Left | 1 | 155465-0-01 | |
| G-15 | Screw 6.35 | 2 | 112684-0-01 | | G-39 | Packing | 2 | 112755-0-01 | |
| G-16 | Screw 6.35 | 4 | 100251-0-01 | | G-40 | Oil Reservoir, Left | 1 | 112686-0-01 | |
| G-17 | Screw 6.35 | 6 | 101706-0-01 | | G-41 | Washer | 2 | 100197-0-02 | |
| G-18 | Bobbin Case Opener | 2 | 155482-0-01 | | G-42 | Screw 6.35 | 2 | 105351-0-02 | |
| G-19 | Washer | 2 | 105161-0-02 | | G-43 | Screw 4.76 | 8 | 100320-0-02 | |
| G-20 | Screw 3.57 x 8 | 2 | 009670-8-12 | | G-44 | Oil Gauge | 2 | 151006-0-01 | |
| G-21 | Opener Lever | 2 | 150968-0-01 | | G-45 | Oil Pipe | 2 | 115287-0-00 | |
| G-22 | Opener Link | 2 | 150967-0-01 | | G-46 | Nut 4.37 | 2 | 105234-0-01 | |
| G-23 | Stud | 2 | 148005-0-01 | | G-47 | Washer 4.37 | 2 | 028680-2-43 | |
| G-24 | Washer 4.76 | 2 | 025710-2-32 | | G-48 | Washer | 2 | 100645-0-03 | |
| G-25 | Nut 4.76 | 2 | 110161-0-06 | | G-49 | Oil Adjusting Screw | 2 | 112756-0-01 | |
| G-26 | Opener Lever Stud | 2 | 150969-0-01 | | G-50 | Rotary Hook Base, Right | 1 | 155483-0-01 | |
| | | | | | G-51 | Rotary Hook Base Oil Reservoir, Right | 1 | 112702-0-01 | |
| | | | | | G-52 | Screw 4.76 | 8 | 100320-0-02 | |

H. Lubrication



| Ref. No. | Name of Parts | Q'ty | Parts No. | Assembly No. | Ref. No. | Name of Parts | Q'ty | Parts No. | Assembly No. |
|----------|---------------------------|------|-------------|--------------|----------|--------------------|------|-------------|--------------|
| H-1 | Oil Stopper Plate Presser | 1 | 112717-0-01 | | H-24 | Felt | 1 | 155486-0-01 | |
| H-2 | Oil Stopper Plate | 1 | 112716-0-01 | | H-25 | Felt | 1 | 112753-0-01 | |
| H-3 | Screw 4.76 x 8 | 1 | 009710-8-12 | | H-26 | Wick | 2 | 155488-0-00 | |
| H-4 | Felt | 1 | 148762-0-01 | | H-27 | Felt | 1 | 112754-0-01 | |
| H-5 | Screw 3.57 x 6 | 1 | 001670-6-12 | | H-28 | Wick | 1 | 112738-0-00 | |
| H-6 | Felt | 1 | 155485-0-01 | | H-29 | Oil Tube | 1 | 143671-0-00 | |
| H-7 | Washer | 1 | 116662-0-03 | | H-30 | Wick 4 x 4 | 1 | 152956-0-01 | |
| H-8 | Screw 4.76 x 20 | 1 | 009712-0-12 | | H-31 | Oil Tube | 1 | 148733-0-01 | |
| H-9 | Felt | 1 | 141742-0-01 | | H-32 | Wick | 1 | 155489-0-00 | |
| H-10 | Oil Tube | 1 | 150997-0-00 | | H-33 | Tube Holder | 1 | 112743-0-01 | |
| H-11 | Cap for Oil Inlet | 1 | 113526-0-01 | | H-34 | Set Screw 3.57 x 5 | 1 | 009670-5-12 | |
| H-12 | Felt | 1 | 112754-0-01 | | H-35 | Tube Stopper | 1 | 112744-0-01 | |
| H-13 | Oil Pendulum | 1 | 150994-0-00 | | H-36 | Screw 3.57 x 5 | 1 | 009670-5-12 | |
| H-14 | Screw 3.57 x 6 | 1 | 009670-6-12 | | H-37 | Felt Presser | 4 | 155487-0-01 | |
| H-15 | Spring | 1 | 150993-0-01 | | H-38 | Screw 3.57 x 5 | 4 | 009670-5-12 | |
| H-16 | Screw 4.37 x 6 | 1 | 009680-6-12 | | H-39 | Felt Presser | 1 | 114297-0-01 | |
| H-17 | Washer 4.37 | 1 | 028680-2-43 | | H-40 | Screw 3.57 x 5 | 1 | 009670-5-12 | |
| H-18 | Washer 4.37 | 1 | 025680-2-32 | | H-41 | Wick Support | 1 | 143673-0-01 | |
| H-19 | Oil Gauge Window | 1 | 150990-0-01 | | H-42 | Screw 3.18 x 4 | 2 | 009660-4-12 | |
| H-20 | Wick | 1 | 112738-0-00 | | H-43 | Oil Pan | 1 | 151007-0-01 | |
| H-21 | Oil Tube | 1 | 112737-0-01 | | H-44 | Nail | 5 | 109714-0-00 | |
| H-22 | Wick | 1 | 112736-0-00 | | H-45 | Oiler | 1 | 114486-0-01 | |
| H-23 | Oil Cap | 1 | 112758-0-01 | | | | | | |

Z. Accessories



| Ref. No. | Name of Parts | Q'ty | Parts No. | Assembly No. | Ref. No. | Name of Parts | Q'ty | Parts No. | Assembly No. |
|-----------|------------------------------|------|-------------|--|----------|-------------------------------------|------|-------------|---------------|
| Z- 1 | Vinyl Bag | | 122991-0-01 | | Z-13- 3 | Washer | | | |
| Z- 2 | Screw Driver 5.5 x 190 | | 101572-1-01 | | Z-13- 4 | Bobbin Winder Wheel Shaft Supporter | | | |
| Z- 3 | Screw Driver 3.4 x 70 | | 118837-0-01 | | Z-13- 5 | Bobbin Winder Shaft | | 117970-0-01 | |
| Z- 4 | Screw Driver 1.9 x 52 | | 142443-0-01 | | Z-13- 6 | Screw 3.18 | | 100657-0-01 | |
| Z- 5 | Spanner 8 x 9 | | 100887-0-01 | | Z-13- 7 | Bobbin Presser | | | |
| Z- 6 | Spanner 10 x 12 | | 107780-0-01 | | Z-13- 8 | Tension Control Nut | | | |
| Z- 7 | Needle Bag | | | | Z-13- 9 | Tension Spring | | 100401-0-01 | |
| Z- 8 | Needle DP x 5 | | | | Z-13-10 | Tension Disc | | 145446-0-01 | |
| Z- 9 | Bobbin | | 155484-0-01 | | Z-13-11 | Screw 4.37 | | | |
| Z-10 | Felt | | 114941-0-01 | | Z-13-12 | Bobbin Winder Guide Assembly | | | Z-13 |
| Z-11 | Head Rest | | 100477-0-01 | | Z-13-13 | Bobbin Winder Wheel Bracket | | | Bobbin Winder |
| Z-12- 1 | Thread Hanger Assembly 3 | | 150193-0-01 | | Z-13-14 | Screw 3.18 | | 100659-0-01 | Assembly |
| Z-12- 2 | Column Cap | | | Z-12 | Z-13-15 | Pin | | | 117963-0-01 |
| Z-12- 3 | Washer | | 025050-2-33 | Z-12 Cotton Stand Assembly 3 150151-0-01 | Z-13-16 | Spring | | 117969-0-01 | |
| Z-12- 4 | Bolt 5 x 28 | | 017502-8-03 | | Z-13-17 | Bobbin Presser Arm | | | |
| Z-12- 5 | Pipe | | 150172-0-01 | | Z-13-18 | Pin | | 100661-0-01 | |
| Z-12- 6-1 | Joint | | | Z-12-6 | Z-13-19 | Bobbin Presser Bracket | | | |
| Z-12- 6-2 | Screw 5 x 14 | | 150202-0-01 | Joint for Cotton Stand 150106-0-01 | Z-13-20 | Screw 3.57 x 3.5 | | 009679-3-12 | |
| Z-12- 6-3 | Nut 5 | | 021500-1-03 | | Z-13-21 | Bobbin Winder Wheel Stopper Holder | | | |
| Z-12- 7 | Spool Shaft (B) | | 150179-0-01 | | Z-13-22 | Bobbin Winder Wheel Stopper | | 100662-0-01 | |
| Z-12- 8 | Spool Cushion | | 126863-0-00 | | Z-14 | Screw 5.5 x 20 | | 100666-0-02 | |
| Z-12- 9 | Spool Mat | | 150182-0-00 | | Z-15- 1 | Belt Cover D | | | |
| Z-12-10 | Spool Stand Base | | 150180-0-00 | | Z-15- 2 | Screw 5.5 x 20 | | 100666-0-02 | |
| Z-12-11 | Washer 2-5 | | 028050-2-43 | | Z-15- 3 | Washer 5.56 | | 025750-1-32 | |
| Z-12-12 | Nut 5 | | 021500-1-03 | | Z-15- 4 | Belt Cover U | | | Z-15 |
| Z-12-13 | Spool Holder Supporter A | | 150188-0-01 | | Z-15- 5 | Belt Cover Stud (B) | | 147856-0-02 | Belt Cover |
| Z-12-14 | Screw 5 x 10 | | 007501-0-03 | | Z-15- 6 | Belt Cover Stud (D) | | 147858-0-01 | Complete D |
| Z-12-15 | Nut 5 | | 021500-1-03 | | Z-15- 7 | Washer 4.37 | | 028680-2-42 | 147908-0-01 |
| Z-12-16 | Screw 4.5 x 22 | | 031452-2-03 | | Z-15- 8 | Screw 4.37 x 8 | | 009680-8-12 | |
| Z-12-17 | Spool Holder Assembly 3 | | 150175-0-01 | | Z-16 | Oiler | | 114483-0-01 | |
| Z-12-18 | Bolt 5 x 28 | | 017502-8-03 | | Z-17 | Oil Tank | | 154702-0-01 | |
| Z-12-19-1 | Bracket | | 150189-0-01 | Z-12-19 | Z-18 | Head Cushion | | 148890-1-01 | |
| Z-12-19-2 | Screw 6 x 10 | | 150181-0-01 | Bracket Assembly 150139-0-01 | Z-19 | Nail | | 109714-0-00 | |
| Z-12-20 | Screw 4.5 x 22 | | 031452-2-03 | | Z-20 | Head Hinge | | 148882-0-01 | |
| Z-13- 1 | Bobbin Winder Wheel Assembly | | | Z-13 | Z-21 | Screw 6.35 | | 112569-0-01 | |
| Z-13- 2 | Screw 4.37 x 5 | | 100366-0-02 | Bobbin Winder Assembly 117963-0-01 | Z-22 | Rubber Hinge | | 143910-0-01 | |
| | | | | | Z-23 | Head Cover | | 144222-0-01 | |

*The details of included accessories are subject to change.

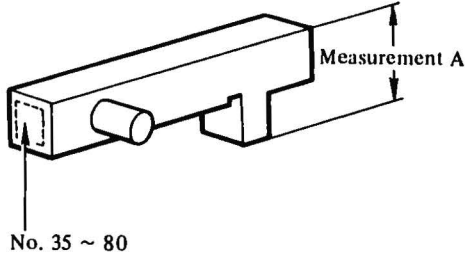
*Les détails des accessoires inclus sont sujets à des changements.

*Änderungen in der Aufstellung der mitgelieferten Zubehöre sind vorbehalten.

*Los detalles de los accesorios incluidos pueden variar.

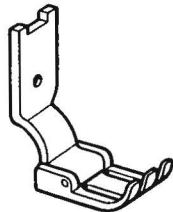

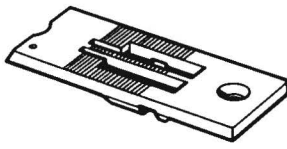
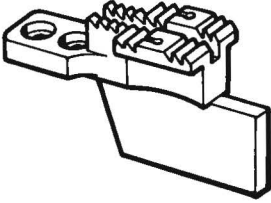
DIFFERENT PARTS LIST

| Ref. No. | Sub-Class Name of Parts | -3 (For medium-thick materials) | -5 (For thick materials) |
|----------|----------------------------|------------------------------------|-----------------------------|
| C-8 | Needle DP x 5 | 107415-0-14 | 107415-0-22 |
| Z-8 | | | |

| Ref. No. | Name of Parts | Parts No. | No. | Measurement A |
|----------|---|-------------|-----|---------------|
| C-2-3 | Slide Block Assembly | 149618-0-02 | 35 | 11.35 mm |
| |  | 149618-0-03 | 40 | 11.40 mm |
| | | 149618-0-04 | 45 | 11.45 mm |
| | | 149618-0-05 | 50 | 11.50 mm |
| | | 149618-0-06 | 55 | 11.55 mm |
| | | 149618-0-07 | 60 | 11.60 mm |
| | | 149618-0-08 | 65 | 11.65 mm |
| | | 149618-0-09 | 70 | 11.70 mm |
| | | 149618-0-10 | 75 | 11.75 mm |
| | | 149618-0-11 | 80 | 11.80 mm |

* When placing an order for slide block assembly, please specify the part code number, depending upon the No. marked on the side face of the part or "A" measurement, referring the above list.

a. GAUGE PARTS LIST

| Needle Gauge | Presser Foot Assembly | Needle Clamp with Screw | Needle Plate Assembly | Feed Dog | | | | |
|------------------------|---|---|--|---|----------|-------------|----------|-------------|
| Model 1/4 inch |  |  |  |  | | | | |
| inch | Ref No. | Parts No. | Ref. No. | Parts No. | Ref. No. | Parts No. | Ref. No. | Parts No. |
| 1/8 inch (3.17 mm) | a-1-1 | 155463-0-01 | a-1-2 | 150885-0-01 | a-1-3 | 117369-0-01 | a-1-4 | 114951-0-01 |
| 5/32 inch (3.96 mm) | a-2-1 | 155455-0-01 | a-2-2 | 150843-0-01 | a-2-3 | 150850-0-01 | a-2-4 | 116509-0-01 |
| 3/16 inch (4.76 mm) | a-3-1 | 155457-0-01 | a-3-2 | 150844-0-01 | a-3-3 | 117133-0-01 | a-3-4 | 112659-0-01 |
| 1/4 inch (6.35 mm) | F-11 | 155453-0-01 | C-3 | 150830-0-01 | A-34 | 117367-0-01 | F-62 | 112660-0-01 |
| 5/16 inch (7.93 mm) | a-4-1 | 155459-0-01 | a-4-2 | 150845-0-01 | a-4-3 | 144882-0-01 | a-4-4 | 112661-0-01 |
| 3/8 inch (9.52 mm) | a-5-1 | 155461-0-01 | a-5-2 | 150846-0-01 | a-5-3 | 144881-0-01 | a-5-4 | 116510-1-01 |

I N D E X

| Parts No. | Ref. No. | Remark | Parts No. | Ref. No. | Remark | Parts No. | Ref. No. | Remark | Parts No. | Ref. No. | Remark |
|-------------|------------|--------|-------------|------------|--------|-------------|------------|--------|-------------|----------|--------|
| 001639-3-12 | C- 2-19- 2 | | 047301-8-42 | D-21- 3 | | 108960-0-04 | A-27 | | 112756-0-01 | G-49 | |
| 001660-5-12 | C- 2-18 | | 048030-3-42 | D-36 | | | A-31 | | 112758-0-01 | H-23 | |
| | C-13 | | 048040-3-42 | D-37 | | 109714-0-00 | H-44 | | 112759-0-01 | F-60 | |
| 001670-6-12 | H- 5 | | 048060-3-42 | F-43 | | | Z-19 | | 112760-0-01 | B-26 | |
| 005671-2-12 | G-10 | | 048070-3-42 | F- 3 | | 110161-0-06 | G-25 | | 112763-0-01 | F-10 | |
| 007501-0-03 | Z-12-14 | | 071063-5-50 | D-24 | | 112072-0-01 | F- 7 | | 112764-0-01 | B-37 | |
| 009660-4-12 | H-42 | | 072620-4-60 | B-27 | | 112566-0-03 | A-13 | | 113014-0-00 | B-11 | |
| 009670-5-12 | B-33 | | 100032-0-03 | A-35 | | 112569-0-01 | Z-21 | | 113024-0-00 | B-18 | |
| | C-11 | | 100043-0-03 | D-12 | | 112572-0-01 | B-19 | | 113050-0-01 | E-12 | |
| | D-34 | | 100064-0-02 | A-47 | | 112573-0-01 | B-14 | | 113074-0-01 | F-46 | |
| | H-34 | | 100105-0-02 | C- 2-19- 9 | | 112576-0-01 | B-13 | | 113362-0-01 | G- 3 | |
| | H-36 | | 100134-0-01 | A-43-12 | | 112586-0-01 | B-22 | | 113386-0-00 | A-36 | |
| | H-38 | | 100197-0-02 | G-41 | | 112594-0-01 | B-40 | | 113526-0-01 | H-11 | |
| | H-40 | | 100242-0-03 | F-61 | | 112595-0-00 | B-30 | | 114297-0-01 | H-39 | |
| 009670-6-12 | A-14 | | 100248-0-01 | B-21 | | 112596-0-01 | B-38 | | 114483-0-01 | Z-16 | |
| | A-46 | | 100250-0-01 | B- 6 | | 112597-0-01 | B-39 | | 114486-0-01 | H-45 | |
| | D- 2 | | 100251-0-01 | B-10 | | 112598-0-01 | B-35 | | 114680-0-01 | B-20 | |
| | H-14 | | | G-16 | | 112606-0-01 | A-37 | | 114693-0-01 | B-17 | |
| 009670-8-12 | A- 2 | | 100320-0-02 | G-43 | | 112607-0-01 | A-40 | | 114909-0-01 | E-23 | |
| | E- 9 | | | G-52 | | 112609-0-01 | C- 2-19-15 | | 114941-0-01 | A-30 | |
| | G-20 | | 100328-0-01 | F-16 | | 112610-0-01 | A-38 | | | Z-10 | |
| 009679-3-12 | Z-13-20 | | 100366-0-02 | Z-13- 2 | | 112614-0-01 | E- 1 | | 114951-0-01 | a- 1- 4 | |
| 009680-6-12 | H-16 | | 100401-0-01 | Z-13- 9 | | 112615-0-01 | E- 2 | | 115287-0-00 | G-45 | |
| 009680-7-12 | E- 3- 2 | | 100477-0-01 | Z-11 | | 112616-0-01 | E- 8 | | 115638-0-04 | D-15 | |
| 009680-8-12 | Z-15- 8 | | 100645-0-03 | F-25 | | 112618-0-01 | F- 6 | | 116010-0-01 | A-39 | |
| 009681-0-12 | F-26 | | | G-48 | | 112619-0-01 | F- 7 | | 116283-0-01 | F-63 | |
| | F-36- 3 | | 100657-0-01 | Z-13- 6 | | 112623-0-01 | F-19 | | 116509-0-01 | a- 2- 4 | |
| 009681-0-14 | A-44 | | 100659-0-01 | Z-13-14 | | 112624-0-01 | E-17 | | 116510-1-01 | a- 5- 4 | |
| 009681-2-14 | A- 9 | | 100661-0-01 | Z-13-18 | | 112625-0-01 | E-13 | | 116662-0-03 | H- 7 | |
| 009710-8-12 | A- 6 | | 100662-0-01 | Z-13-22 | | 112626-0-01 | F-15 | | 117133-0-01 | a- 3- 3 | |
| | F-31 | | 100666-0-02 | Z-14 | | 112628-0-01 | E-21 | | 117367-0-01 | A-34 | |
| | H- 3 | | | Z-15- 2 | | 112629-0-01 | E-16 | | 117369-0-01 | a- 1- 3 | |
| 009710-8-13 | D-28 | | 100887-0-01 | Z- 5 | | 112630-0-01 | F-14 | | 117963-0-01 | Z-13 | |
| 009711-0-12 | D-33 | | 101268-0-03 | B-34 | | 112631-0-01 | F- 5 | | 117969-0-01 | Z-13-16 | |
| 009711-4-12 | F-23 | | 101572-1-01 | Z- 2 | | 112658-0-01 | A-26 | | 117970-0-01 | Z-13- 5 | |
| 009711-4-13 | D-20 | | 101706-0-01 | B- 9 | | 112659-0-01 | a- 3- 4 | | 118170-1-01 | F-18 | |
| 009712-0-12 | H- 8 | | | F-35- 2 | | 112660-0-01 | F-62 | | 118320-0-01 | A-43-18 | |
| 009761-4-12 | F-57 | | | F-47 | | 112661-0-01 | a- 4- 4 | | 118713-0-01 | F-28 | |
| 009781-8-12 | B-36 | | | G-17 | | 112666-0-00 | G- 7- 1 | | 118746-0-01 | F- 6 | |
| | F-45 | | 102731-0-04 | C- 2-23 | | 112667-0-01 | G- 7- 2 | | 118747-0-01 | F- 8 | |
| 011679-3-12 | D- 8 | | 102843-0-01 | C- 2- 5 | | 112668-0-01 | G- 9 | | 118837-0-01 | Z- 3 | |
| 013660-4-13 | C- 3- 2 | | 104449-0-01 | A- 4 | | 112684-0-01 | G- 5- 2 | | 118853-0-01 | F- 9 | |
| 013761-4-10 | B-29 | | 104908-0-04 | F-51 | | | G-15 | | | F-34 | |
| | F-49 | | 105161-0-02 | G-19 | | 112686-0-01 | G-40 | | 118954-0-00 | F-39- 2 | |
| 013771-2-12 | B-25 | | 105234-0-01 | G-46 | | 112696-0-00 | G-28 | | 120264-0-01 | C- 2- 7 | |
| | G-13 | | 105288-0-01 | C-17 | | 112698-0-01 | G- 7 | | 122991-0-01 | Z- 1 | |
| 013780-7-10 | G- 8 | | 105351-0-02 | B-31 | | 112699-0-01 | G-34 | | 126863-0-00 | Z-12- 8 | |
| 014760-6-22 | F-20 | | | G-42 | | 112700-0-01 | G-35 | | 140527-0-01 | A-11 | |
| 015771-2-12 | B-24 | | 106030-0-01 | E-28 | | 112702-0-01 | G-51 | | 141742-0-01 | H- 9 | |
| | G-12 | | 107030-0-01 | C- 2-12 | | 112709-0-01 | A-45 | | 142443-0-01 | Z- 4 | |
| 017502-8-03 | Z-12- 4 | | 107155-0-01 | G-27 | | 112712-0-01 | A-43-17 | | 142746-0-02 | F-14 | |
| | Z-12-18 | | 107272-0-02 | D- 4 | | 112714-0-00 | A-23 | | 142747-0-02 | F-15 | |
| 021500-1-03 | Z-12- 6- 3 | | | D-14 | | 112715-0-01 | A-29 | | 143591-0-01 | F-53 | |
| | Z-12-12 | | 107278-0-02 | F-56 | | 112716-0-01 | H- 2 | | 143594-0-01 | F-36- 2 | |
| | Z-12-15 | | 107404-0-00 | C- 7 | | 112717-0-01 | H- 1 | | 143597-0-01 | F-38 | |
| 021660-1-03 | F-55 | | 107415-0-14 | C- 8 | | 112734-0-01 | B-15 | | 143598-0-01 | F-11 | |
| 021670-1-02 | A-43- 9 | | | Z- 8 | | 112735-0-00 | B-12 | | 143608-0-01 | F-19 | |
| 025050-2-33 | Z-12- 3 | | 107415-0-22 | C- 8 | | 112736-0-00 | H-22 | | 143609-0-01 | F-32 | |
| 025060-1-32 | F-58 | | | Z- 8 | | 112737-0-01 | H-21 | | 143610-0-01 | F-30 | |
| 025680-2-32 | H-18 | | 107780-0-01 | Z- 6 | | 112738-0-00 | H-20 | | 143613-0-01 | F-39- 3 | |
| 025710-2-32 | D-31 | | 107794-0-01 | G-31 | | | H-28 | | 143616-0-01 | F-42 | |
| | D-38 | | | G-33 | | 112739-0-01 | B-32 | | 143671-0-00 | H-29 | |
| | G-24 | | 108254-0-01 | A-43-19 | | | C-10 | | 143673-0-01 | H-41 | |
| 025750-1-32 | Z-15- 3 | | 108265-0-01 | A-43-10 | | 112743-0-01 | H-33 | | 143766-0-01 | F- 1 | |
| 028050-2-43 | Z-12-11 | | 108266-0-01 | A-24 | | 112744-0-01 | H-35 | | 143910-0-01 | Z-22 | |
| 028680-2-42 | Z-15- 7 | | 108546-0-01 | F-19- 2 | | 112751-0-02 | A-33 | | 144222-0-01 | Z-23 | |
| 028680-2-43 | G-47 | | 108549-0-01 | F-10 | | 112753-0-01 | H-25 | | 144458-0-01 | E-25 | |
| | H-17 | | 108960-0-04 | A- 7 | | 112754-0-01 | H-12 | | 144614-0-01 | B-28 | |
| 031452-2-03 | Z-12-16 | | | A-20 | | | H-27 | | 144680-0-01 | A-43-22 | |
| | Z-12-20 | | | A-25 | | 112755-0-01 | G-39 | | 144682-0-01 | A-43-20 | |

| Parts No. | Ref. No. | Remark | Parts No. | Ref. No. | Remark | Parts No. | Ref. No. | Remark | Parts No. | Ref. No. | Remark |
|-------------|------------|--------|-------------|------------|--------|-------------|------------|--------|-----------|----------|--------|
| 144683-0-01 | A-43-16 | | 149821-0-01 | B- 8 | | 150997-0-00 | 11-10 | | | | |
| 144685-0-01 | A-43- 5 | | 149827-0-01 | C- 2-19- 6 | | 151006-0-01 | G-44 | | | | |
| 144686-0-01 | A-43- 7 | | 149831-0-01 | C- 4 | | 151007-0-01 | 11-43 | | | | |
| 144687-0-01 | A-43- 8 | | 149832-0-01 | C- 6 | | 151029-0-01 | G-36- 2- 5 | | | | |
| 144688-0-01 | A-43- 6 | | 149833-0-01 | C- 5 | | 151035-0-01 | G-36- 2- 3 | | | | |
| 144689-0-01 | A-43- 4 | | 149834-0-00 | C-14 | | 151081-0-01 | F-52 | | | | |
| 144703-0-01 | a- 5- 3 | | 149837-0-01 | D-32 | | 151082-0-01 | G- 1 | | | | |
| 144704-0-01 | a- 4- 3 | | 149838-0-01 | D-35 | | 151098-0-01 | E-27 | | | | |
| 144823-0-01 | A-22 | | 149839-0-01 | D-29 | | 151601-0-02 | E-26- 2 | | | | |
| 144881-1-01 | A-34 | | 149843-0-01 | D-30 | | 151602-0-01 | F-29 | | | | |
| 144882-0-01 | A-34 | | 149847-0-01 | D-21 | | 151602-0-02 | A-28 | | | | |
| 145328-0-01 | F-36- 4 | | 149852-0-01 | D-27 | | 151604-0-01 | G- 4 | | | | |
| 145446-0-01 | A-43-13 | | 149853-0-01 | D-26 | | 151605-0-01 | B- 2 | | | | |
| | Z-13-10 | | 149855-0-01 | D-19 | | | F- 4 | | | | |
| 145502-0-01 | F-17 | | 149856-0-01 | D-17 | | | F-40- 2 | | | | |
| 146141-0-01 | B- 7 | | 149857-0-01 | D- 9 | | 152956-0-01 | H-30 | | | | |
| 146597-1-01 | D-18 | | 149858-0-01 | D- 3 | | 153168-0-01 | F-12 | | | | |
| 147503-0-01 | F-21 | | 149859-0-01 | D-16 | | 153483-0-01 | G-29 | | | | |
| 147856-0-02 | Z-15- 5 | | 149860-0-01 | D- 5 | | 153604-0-01 | C- 2- 1 | | | | |
| 147858-0-01 | Z-15- 6 | | 149863-0-01 | D-10 | | 153606-0-01 | C- 2- 2 | | | | |
| 147908-0-01 | Z-15 | | 149864-0-01 | D- 7 | | 153876-0-02 | A- 8 | | | | |
| 148005-0-01 | G-23 | | | E-24 | | 154702-0-01 | Z-17 | | | | |
| 148483-0-01 | F- 4 | | 149865-0-01 | D- 6 | | 154792-0-01 | F-13 | | | | |
| 148488-0-01 | F- 2 | | 149866-0-02 | D- 1 | | 155439-0-01 | A- 5 | | | | |
| 148489-0-01 | F- 5 | | 149867-0-01 | D-13 | | 155440-0-01 | A- 1 | | | | |
| 148493-0-01 | F-41 | | 149868-0-01 | D-11 | | 155443-0-01 | B- 3 | | | | |
| 148494-0-01 | F-48 | | 150106-0-01 | Z-12- 6 | | 155444-0-01 | B- 1 | | | | |
| 148502-0-00 | G- 6 | | 150139-0-01 | Z-12-19 | | 155445-0-01 | B-16 | | | | |
| 148503-0-00 | G- 2 | | 150151-0-01 | Z-12 | | 155447-0-01 | E-22 | | | | |
| 148598-0-01 | C- 16 | | 150172-0-01 | Z-12- 5 | | 155448-0-01 | F-27 | | | | |
| 148733-0-01 | H-31 | | 150175-0-01 | Z-12-17 | | 155449-0-01 | F-33 | | | | |
| 148743-0-01 | F-37 | | 150179-0-01 | Z-12- 7 | | 155450-0-01 | F-18 | | | | |
| 148762-0-01 | H- 4 | | 150180-0-00 | Z-12-10 | | 155451-0-01 | F-40 | | | | |
| 148771-0-01 | F-36 | | 150181-0-01 | Z-12-19- 2 | | 155453-0-01 | E-11 | | | | |
| 148882-0-01 | Z-20 | | 150182-0-00 | Z-12- 9 | | 155455-0-01 | a- 2- 1 | | | | |
| 148890-1-01 | Z-18 | | 150188-0-01 | Z-12-13 | | 155457-0-01 | a- 3- 1 | | | | |
| 148977-0-01 | F-54 | | 150189-0-01 | Z-12-19- 1 | | 155459-0-01 | a- 4- 1 | | | | |
| 149001-0-01 | F-50 | | 150193-0-01 | Z-12- 1 | | 155461-0-01 | a- 5- 1 | | | | |
| 149282-0-01 | F-24 | | 150202-0-01 | Z-12- 6- 2 | | 155463-0-01 | a- 1- 1 | | | | |
| 149604-0-01 | C- 2-19-11 | | 150369-0-01 | C- 2 | | 155465-0-01 | G-38 | | | | |
| 149605-0-01 | C- 2-19-13 | | 150374-0-00 | C- 9 | | 155466-0-01 | G-36 | | | | |
| 149606-0-01 | C- 2-19-14 | | 150553-0-03 | A-12 | | 155476-0-01 | G-36- 2 | | | | |
| 149607-0-01 | C- 2-19-16 | | 150815-0-01 | A- 3 | | 155478-0-01 | G-36- 2- 2 | | | | |
| 149608-0-01 | C- 2-19- 7 | | 150816-0-01 | C- 2-21 | | 155479-0-01 | G-36- 2- 4 | | | | |
| 149609-0-01 | C- 2-19- 8 | | 150817-1-01 | C- 1 | | 155480-0-01 | G-36- 2- 6 | | | | |
| 149610-0-01 | C- 2-19- 3 | | 150818-0-01 | D-25 | | 155482-0-01 | G-18 | | | | |
| 149611-0-01 | C- 2-19- 4 | | 150819-0-01 | D-22 | | 155483-0-01 | G-50 | | | | |
| 149612-0-01 | C- 2-19- 1 | | 150820-0-01 | D-23 | | 155484-0-01 | G-37 | | | | |
| 149613-0-01 | C- 2-20 | | 150825-0-01 | C-15 | | | Z- 9 | | | | |
| 149614-0-01 | C- 2- 8 | | 150830-0-01 | C- 3 | | 155485-0-01 | H- 6 | | | | |
| 149615-0-01 | C- 2- 9 | | 150843-0-01 | a- 2- 2 | | 155486-0-01 | H-24 | | | | |
| 149616-0-01 | C- 2- 6 | | 150844-0-01 | a- 3- 2 | | 155487-0-01 | H-37 | | | | |
| 149617-0-01 | C- 2- 4 | | 150845-0-01 | a- 4- 2 | | 155488-0-00 | H-26 | | | | |
| 149618-0-02 | C- 2- 3 | | 150846-0-01 | a- 5- 2 | | 155489-0-00 | H-32 | | | | |
| 149618-0-03 | C- 2- 3 | | 150850-0-01 | a- 2- 3 | | 155490-0-01 | A-43 | | | | |
| 149618-0-04 | C- 2- 3 | | 150885-0-01 | a- 1- 2 | | 155491-0-01 | A-43-21 | | | | |
| 149618-0-05 | C- 2- 3 | | 150926-0-01 | F-39 | | 155492-0-01 | A-43-11 | | | | |
| 149618-0-06 | C- 2- 3 | | 150927-0-00 | F-39- 1 | | 155493-0-01 | A-19 | | | | |
| 149618-0-07 | C- 2- 3 | | 150930-0-01 | F-44 | | 155494-0-01 | A-21 | | | | |
| 149618-0-08 | C- 2- 3 | | 150958-0-01 | F-39 | | 155505-0-01 | E-20 | | | | |
| 149618-0-09 | C- 2- 3 | | 150964-1-01 | G-32 | | 156070-0-01 | F-22 | | | | |
| 149618-0-10 | C- 2- 3 | | 150965-0-01 | G-30 | | 180157-0-01 | B-23 | | | | |
| 149618-0-11 | C- 2- 3 | | 150967-0-01 | G-22 | | 180164-0-01 | G-11 | | | | |
| 149621-0-01 | C- 2-15 | | 150968-0-01 | G-21 | | 180321-0-01 | F-35 | | | | |
| 149622-0-01 | C- 2-16 | | 150969-0-01 | G-26 | | 180949-0-01 | G-14 | | | | |
| 149623-0-01 | C- 2-17 | | 150989-0-00 | A-10 | | 180950-0-01 | E- 3 | | | | |
| 149624-0-01 | C- 2-13 | | 150990-0-01 | H-19 | | 181486-0-01 | G- 5 | | | | |
| 149625-0-01 | C- 2-14 | | 150993-0-01 | H-15 | | 183140-0-01 | E-26 | | | | |
| 149626-0-01 | C-12 | | 150994-0-00 | H-13 | | | | | | | |
| 149820-0-00 | B- 5 | | 150995-0-00 | B- 4 | | | | | | | |



118-836
195836-0-02
January, 1981
Printed in Japan

From the library of: Superior Sewing Machine & Supply LLC